

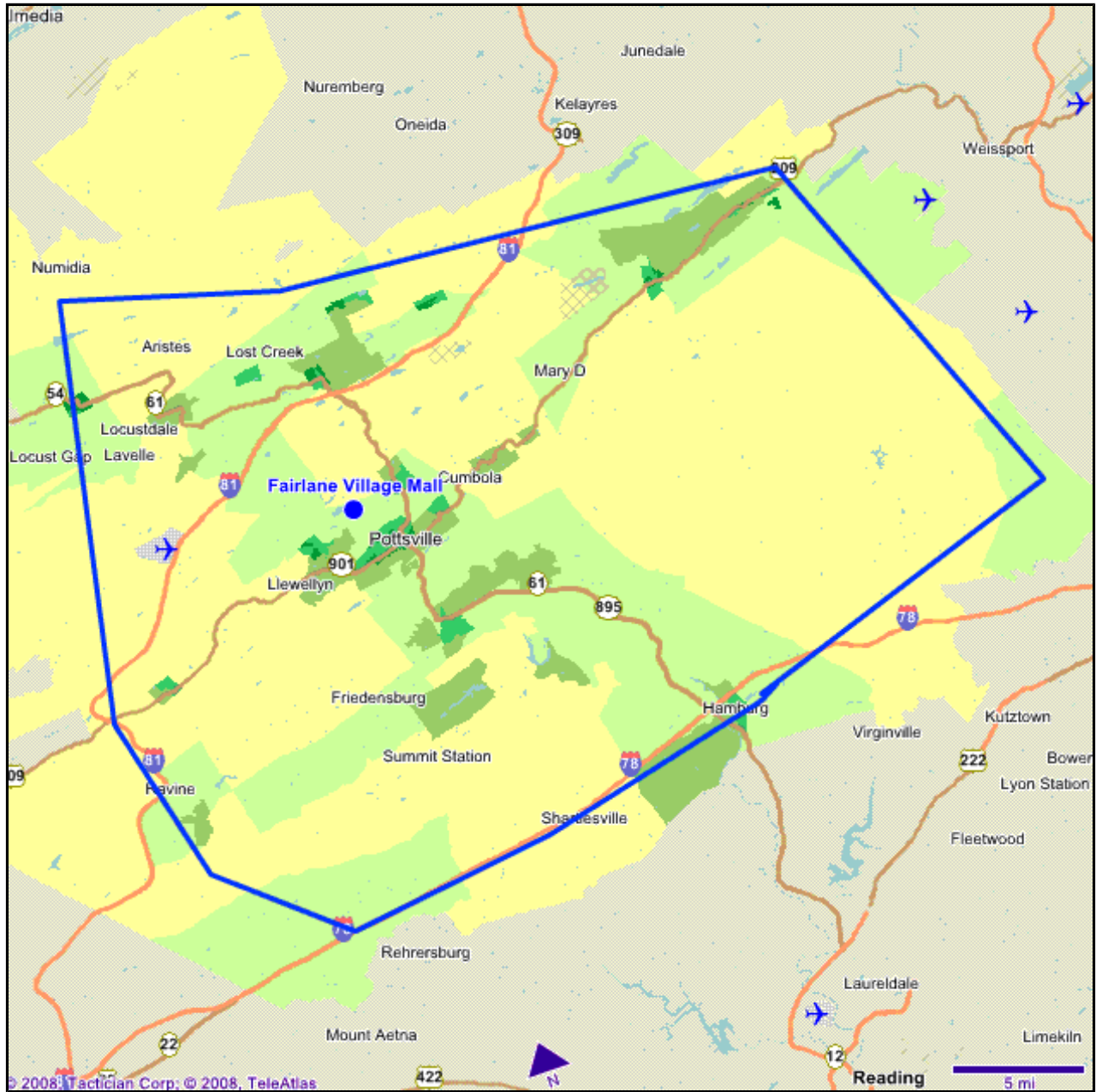
Demographic Trend

Fairlane Village Mall Trade Area

Prepared by Levin Management

Analysis Level: Block Groups

2/11/2008



Route 61 & Ann St
Pottsville, PA 17901

Longitude: -76.227738
Latitude: 40.707514

Summary Demographic				
	2000 CENSUS		2007 ESTIMATE	2012 FORECAST
Population	154,769		152,749	151,967
Households	62,454		63,505	64,268
Families	41,056		41,575	41,951
Median Age	40.9		42.4	43.4
Median Household Income	\$33,234		\$40,249	\$44,548
Average Household Income	\$41,937		\$50,532	\$54,791
Average Household Size	2.48		2.41	2.36

Households by Income						
	2000 CENSUS		2007 ESTIMATE		2012 FORECAST	
	Number	Percent	Number	Percent	Number	Percent
Less Than \$10,000	7,377	11.8%	6,328	10.0%	5,842	9.1%
\$10,000 - \$14,999	6,077	9.7%	4,392	6.9%	3,722	5.8%
\$15,000 - \$19,999	5,128	8.2%	4,732	7.5%	4,692	7.3%
\$20,000 - \$24,999	5,157	8.3%	4,510	7.1%	4,222	6.6%
\$25,000 - \$29,999	4,706	7.5%	4,431	7.0%	3,375	5.3%
\$30,000 - \$34,999	4,300	6.9%	3,822	6.0%	3,803	5.9%
\$35,000 - \$39,999	4,280	6.9%	3,366	5.3%	3,639	5.7%
\$40,000 - \$49,999	6,879	11.0%	6,879	10.8%	6,245	9.7%
\$50,000 - \$59,999	5,904	9.5%	5,972	9.4%	5,884	9.2%
\$60,000 - \$74,999	5,652	9.0%	6,943	10.9%	7,412	11.5%
\$75,000 - \$99,999	4,081	6.5%	6,481	10.2%	7,374	11.5%
\$100,000 - \$124,999	1,398	2.2%	2,745	4.3%	3,547	5.5%
\$125,000 - \$149,999	519	0.8%	1,155	1.8%	2,085	3.2%
\$150,000 - \$199,999	403	0.6%	787	1.2%	1,198	1.9%
\$200,000+	592	0.9%	962	1.5%	1,229	1.9%
Total	62,454	100.0%	63,505	100.0%	64,268	100.0%

Population by Age						
	2000 CENSUS		2007 ESTIMATE		2012 FORECAST	
	Number	Percent	Number	Percent	Number	Percent
Age 0-4	7,766	5.0%	7,691	5.0%	7,888	5.2%
Age 5-9	9,016	5.8%	7,577	5.0%	7,584	5.0%
Age 10-14	9,840	6.4%	8,561	5.6%	7,713	5.1%
Age 15-19	9,299	6.0%	9,000	5.9%	8,512	5.6%
Age 20-24	7,761	5.0%	8,848	5.8%	8,996	5.9%
Age 25-29	9,414	6.1%	9,551	6.3%	9,248	6.1%
Age 30-34	10,604	6.9%	9,629	6.3%	9,536	6.3%
Age 35-39	11,527	7.4%	10,089	6.6%	9,567	6.3%
Age 40-44	12,190	7.9%	11,104	7.3%	10,176	6.7%
Age 45-49	11,470	7.4%	11,799	7.7%	11,100	7.3%
Age 50-54	10,390	6.7%	11,642	7.6%	11,711	7.7%
Age 55-59	7,857	5.1%	10,327	6.8%	11,242	7.4%
Age 60-64	6,918	4.5%	8,472	5.5%	10,043	6.6%
Age 65-69	6,950	4.5%	6,386	4.2%	8,024	5.3%
Age 70-74	7,761	5.0%	5,641	3.7%	5,928	3.9%
Age 75-79	6,969	4.5%	5,696	3.7%	5,136	3.4%
Age 80-84	4,978	3.2%	5,190	3.4%	4,279	2.8%
Age 85+	4,057	2.6%	5,546	3.6%	5,284	3.5%

Total	154,769	100.0%	152,749	100.0%	151,967	100.0%
Median	40.9		42.4		43.4	

Population by Race Trends						
	2000 CENSUS		2007 ESTIMATE		2012 FORECAST	
	Number	Percent	Number	Percent	Number	Percent
White	149,523	96.6%	149,202	97.7%	148,132	97.5%
Black	3,099	2.0%	549	0.4%	325	0.2%
Native American	138	0.1%	45	0.0%	25	0.0%
Asian	650	0.4%	917	0.6%	1,111	0.7%
Hawaiian / Pacific Islander	20	0.0%	8	0.0%	7	0.0%
Two or More	776	0.5%	1,137	0.7%	852	0.6%
Other Race	563	0.4%	891	0.6%	1,508	1.0%
Total	154,769	100.0%	152,749	100.0%	151,959	100.0%

Hispanic Population Trends						
	2000 CENSUS		2007 ESTIMATE		2012 FORECAST	
	Number	Percent	Number	Percent	Number	Percent
Hispanic	1,767	1.1%	2,723	1.8%	3,637	2.4%
Not Hispanic	153,002	98.9%	150,026	98.2%	148,330	97.6%
Total	154,769	100.0%	152,749	100.0%	151,967	100.0%

Households by Occupancy Trends						
	2000 CENSUS		2007 ESTIMATE		2012 FORECAST	
	Number	Percent	Number	Percent	Number	Percent
Owner Occupied	48,223	68.8%	46,288	63.9%	45,371	61.3%
Renter Occupied	14,231	20.3%	17,217	23.8%	18,897	25.5%
Vacant	7,657	10.9%	8,897	12.3%	9,802	13.2%
Total	70,111	100.0%	72,402	100.0%	74,070	100.0%

Daytime Population			
	2000 CENSUS	2007 ESTIMATE	2012 FORECAST
Establishments	0	4,977	0
Employees	0	50,804	0

Internet Marketing Solutions provided by:



Data Provided by:



URL to this document: <http://www.mapscape.com/report/14362B1D06944B0089197E4DB33D5198/1.HTML>